



Support,  
Exhibit &  
Advertising  
Prospectus

# 29th International Conference on Prenatal Diagnosis and Therapy

Cape Town, South Africa    Exhibit Dates: 31 October – 2 November 2025





Building Global Partnerships in  
Genetics and Fetal Care

## About the International Society for Prenatal Diagnosis

ISPD is a professional society that brings together researchers and practitioners from multiple disciplines such as prenatal and perinatal care, medical genetics, basic and translational science, genetic counseling, laboratory management, fetal therapy, ultrasonography, and ethics. While we engage with all areas relevant to prenatal diagnosis and therapy, we have a unique focus and expertise on reproductive and prenatal genetic screening and how this aspect of care integrates with other disciplines.

### ISPD Headquarters

820 East High Street, Suite A  
Charlottesville, VA 22902 USA

+1 434.979.4773

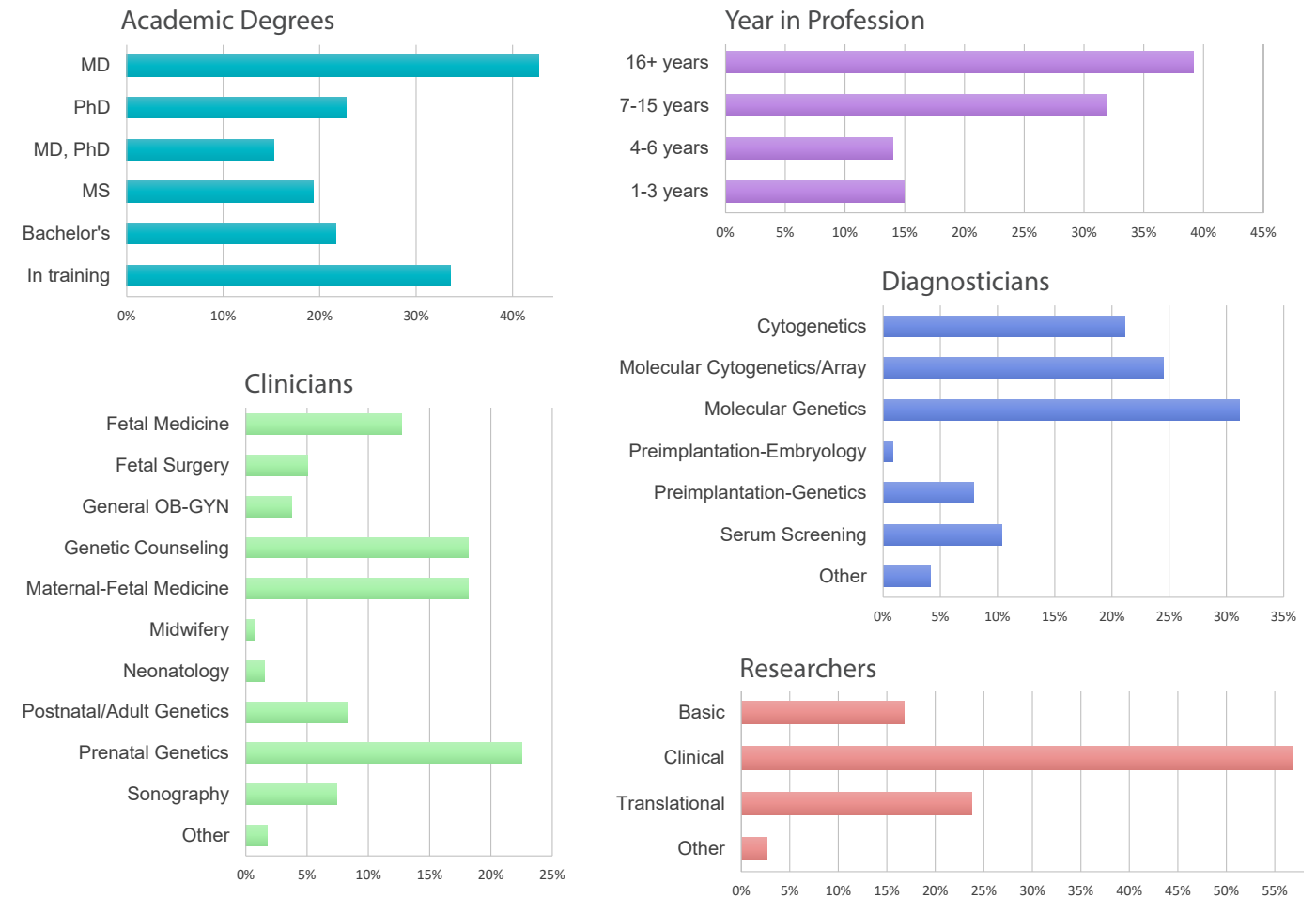
info@ispdhome.org

www.ispdhome.org

## Event Profile

The 29th International Conference on Prenatal Diagnosis and Therapy will attract diverse professionals to invited lectures, debates, podium presentations, and posters on the latest controversies and hot topics in the field. Maximize your marketing reach with opportunities before, during, and after the conference. Exhibit dates are Friday–Sunday, 31 October - 2 November 2025. See the conference schedule on Page 5. More information will be made available at [www.ispdhome.org/2025](http://www.ispdhome.org/2025).

### Attendee Profile



Data from the 27th International Conference on Prenatal Diagnosis and Therapy, a hybrid event held in June 2023

# Cape Town International Convention Centre

The CTICC is Africa's leading convention center located in the heart of Cape Town, South Africa, offering a variety of on-site amenities for event delegates and exhibitors, including restaurants and a tour operator.

The CTICC is just steps from the official conference hotels, fine dining, and more.



## Exhibit and Support Packages

U.S. Dollars (USD)

	Exhibitor \$3,000 for-profit \$1,800 non-profit	Industry Partner \$7,500	Education Partner \$10,000	Premier Partner \$15,000	
<b>Marketing Before and After the Conference</b>	Branded profile on the virtual platform & mobile app: Post documents, videos, etc. <sup>1</sup>	✓	✓	✓	
	Listing in the official program	✓	✓	✓	
	Recognition on the conference website	Name & Link	Logo & Link	Logo & Link	Logo & Link
	Attendee email list 2 weeks before and/or 1 week after conference <i>List includes only attendees who have opted into contact by supporters.</i> <sup>2</sup>			select either list	both lists
	Logo and link in an ISPD social media posting announcing your support <sup>3</sup>			select 1 channel	both channels
	Banner ad inserted in an ISPD email that markets the conference			1 Standard Size	1 Large
<b>Exhibit Booth</b>	Booth size	3 x 3 m	3 x 3 m	3 x 3 m	6 x 3 m
	Booth selection	Fourth priority	Third priority	Second Priority	First Priority
	Includes fabric walls, name printed on fascia, 1 cafe table, 2 chairs, wastebasket, electrical outlet, and 2 spotlights. <sup>4</sup>	✓	✓	✓	✓
<b>Conference Access</b>	Full conference registration including educational sessions	2 reps	4 reps	5 reps	6 reps
	Welcome Reception and breaks	✓	✓	✓	✓
	Participation in the social feed on the virtual conference platform & mobile app	✓	✓	✓	✓
	Company name on exhibit hall signage	✓	✓	✓	✓
	Logo on signage; Company name on daily welcome slide		✓	✓	✓

30% discount is available for organizations based in Africa



- Attendees have access to the virtual platform for **6 months following the conference** to view recordings, posters, etc.
- Each email list may be used for **ONE MAILING ONLY** and includes only attendees who opt into contact by conference supporters.
- LinkedIn and/or X
- Exhibitors may opt out of the standard booth and build their own booth within the defined space. This does not affect the exhibit fee. Free builds must not obscure any other exhibit space or signage. Additional furniture and services may be ordered from our provider for a separate fee.

**Booking with form on page 10 is due 1 September 2025.**

**Invoice payment is due 15 September 2025.**

For Questions: Lynne Valentic  
lvalentic@ispdhome.org  
+1 434.284.4693

### ► Up-size Your Booth | \$1,500 | *subject to availability*

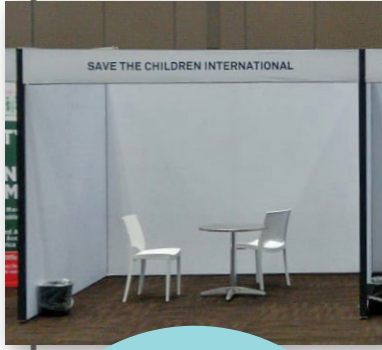
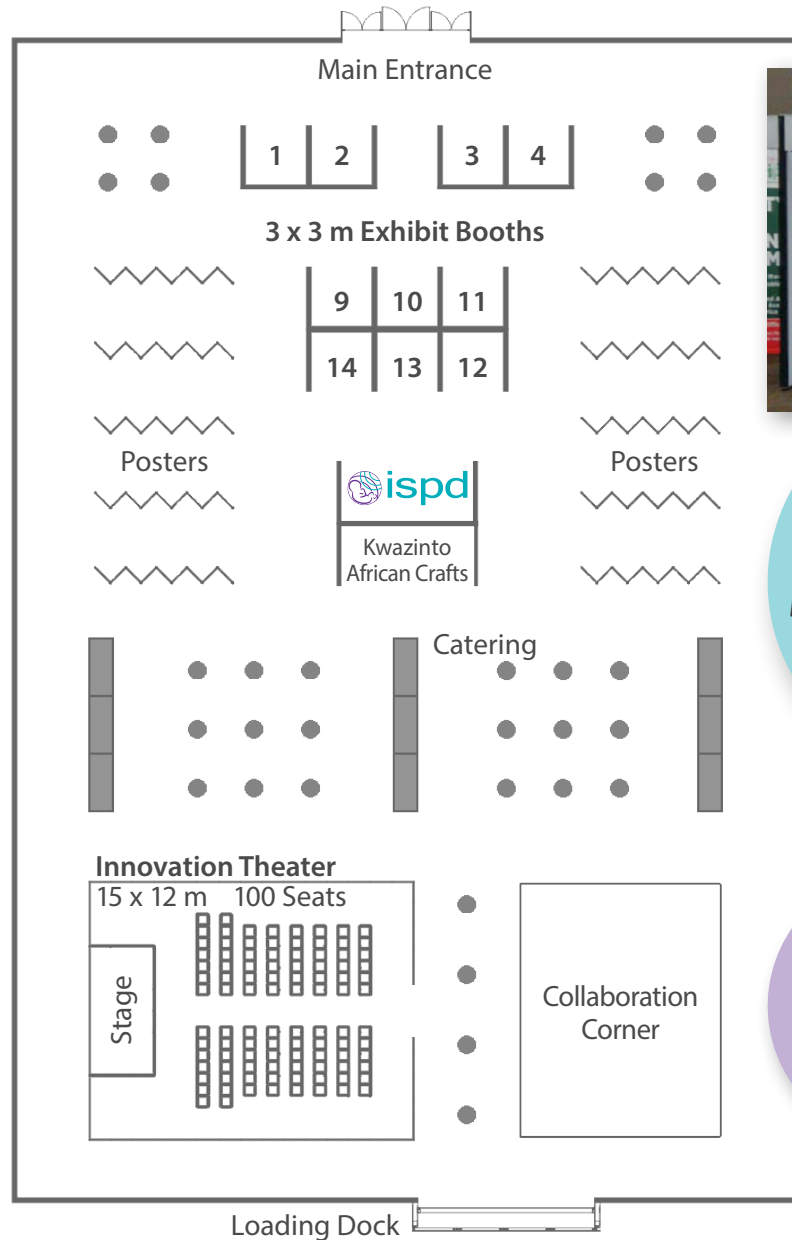
Add another 3 x 3 m space to your exhibit booth. Request adjacent spaces on the booking form on page 10. — *For a single company only; separate companies are required to register as separate exhibitors.*

Recent Exhibitors  
ispdhome.org/ISPD2023/Exhibitors  
ispdhome.org/ISPD2024/Exhibitors

# Exhibit Floor Plan

Cape Town International Convention Centre — Hall 9

See [ispdhome.org/ISPD2025/Exhibitors](http://ispdhome.org/ISPD2025/Exhibitors) for an updated floor plan.



For Questions:  
Lynne Valentic  
Conference Director  
[lvalentic@ispdhome.org](mailto:lvalentic@ispdhome.org)  
+1 434.284.4693

See page 6  
for information  
on Innovation  
Theater

## Conference Schedule – *subject to change*

Exhibitors must be present during breaks, networking lunches, and the Welcome Reception.

### Thursday, 30 October 2025

- 11:00 AM–7:00 PM Exhibitor Move-in
- 9:00 AM–6:00 PM Pre-conference Courses
- 7:30 PM–9:00 PM Dine-Around with Colleagues

### Friday, 31 October 2025

- 7:30 AM–9:00 AM SIG Educational Sessions
- 8:30 AM–9:30 AM Welcome Coffee with Exhibits
- 9:15 AM–11:15 AM Conference Sessions
- 11:15 AM–11:45 PM Break with Exhibits, Innovation Theater\*
- 11:45 PM–12:30 PM Conference Session
- 12:30 PM–2:15 PM Networking Lunch with Posters & Exhibits
- 1:00 PM–2:00 PM Industry Lunch Symposium\*
- 2:15 PM–3:30 PM Conference Session
- 3:30 PM–4:30 PM Break with Exhibits; Attended Poster Session
- 4:30 PM–5:30 PM Debate 1
- 5:30 PM–7:30 PM Welcome Reception with Exhibits; Poster Viewing
- 6:30 PM–7:30 PM Early Career & Scholarship Reception

### Saturday, 1 November 2025

- 7:30 AM–9:00 AM SIG Educational Sessions
- 8:30 AM–9:30 AM Welcome Coffee with Exhibits
- 9:15 AM–10:45 AM Conference Session
- 10:45 AM–11:15 AM Break with Exhibits, Innovation Theater\*
- 11:15 AM–12:00 PM Conference Session
- 12:00 PM–1:45 PM Networking Lunch with Posters & Exhibits
- 12:30 PM–1:30 PM Industry Lunch Symposium\*
- 1:45 PM–3:35 PM Conference Sessions; Pioneer Award
- 3:35 PM–4:05 PM Break with Exhibits, Innovation Theater\*
- 4:05 PM–5:35 PM Awards; Debate 2
- 5:50 PM–6:50 PM Industry Symposium\*

### Sunday, 2 November 2025

- 8:00 AM–9:00 AM Industry Morning Symposium\*
- 8:30 AM–9:30 AM Welcome Coffee with Exhibits
- 9:15 AM–10:45 AM Conference Sessions
- 10:45 AM–11:15 AM Break with Exhibits, Innovation Theater\*
- 11:15 AM–12:15 PM Debate 3
- 12:15 PM–2:00 PM Networking Lunch with Posters & Exhibits
- 12:45 PM–1:45 PM Industry Lunch Symposium\*
- 2:00 PM–3:45 PM Conference Session; Innovation Plenary
- 2:00 PM–6:00 PM Exhibitor Move-out

\* See page 6



## EXCLUSIVE Presentation Opportunities

### Innovation Theater in the Exhibit Hall | \$2,500

*Limit 1 per company*

Make up to a 20-minute presentation in a dedicated space in the exhibit hall during a scheduled beverage break. Showcase your company's solutions to prenatal diagnosis and therapy challenges.\* *Times are subject to change.*

Friday, 31 October 2025, 11:20-11:40 AM **RESERVED**

Saturday, 1 November 2025, 10:50-11:10 AM **RESERVED**

Sunday, 2 November 2025, 10:50-11:10 AM — 1 available

Included:

- Seating for 50 people
- Audio-visual support with sound delivered through earbuds
- Listing of your event on the conference schedule

### Industry Symposium | \$12,000

Give up to a 60-minute educational presentation on your company's contributions to research and clinical practice in a dedicated meeting room during a conference lunch break.\* *Times are subject to change.*

Friday, 31 October 2025, 1:00-1:30 PM (Lunch) **RESERVED**

Saturday, 1 November 2025, 11:00-11:30 AM (Lunch) or 5:15-6:15 PM **RESERVED**

Sunday, 2 November 2025, 8:00-9:00 AM or 12:45-1:45 PM (Lunch)

Included:

- Large meeting room with audio-visual support
- Listing of your event on the conference schedule
- Food and beverage for lunch and breakfast symposia

**Priority will be given to ISPD Corporate Council Members who wish to hold a Symposium.**

*If you would like to discuss membership in our Corporate Council, please contact ISPD Executive Director, Alison Cockrell at [acockrell@ispdhome.org](mailto:acockrell@ispdhome.org).*

\*An outline of your presentation must be reviewed by ISPD prior to the conference. Reservations are subject to approval by the ISPD Board of Directors.



Book a Symposium or Innovation Theater with the form on page 10.

To submit the outline for your event or check availability, please contact Conference Director, Lynne Valentic, at [lvalentic@ispdhome.org](mailto:lvalentic@ispdhome.org) or +1 434.284.4693.

Symposium  
Outline  
Deadline:  
1 SEP 2025

ISPD  
Corporate  
Council



[ispdhome.org/CorporateCouncil](https://ispdhome.org/CorporateCouncil)

## Exclusive Branding Opportunities All prices are in U.S. Dollars (USD)

### Welcome Reception | \$7,500 | *Exclusive*

Your branding will be displayed prominently during this popular event. Details will be provided.\*

### Networking Beverage Break | \$5,000 | *5 Opportunities of 30 minutes or more*

Opportunity to provide branded drinkware that grabs attention as attendees mingle and network.\*

### Lanyards for Attendee Badges | \$5,000 | *Exclusive for a Nonprofit Organization*

Make an impact with the name or logo of your fetal center, foundation, or advocacy group. All attendees are required to wear the badge to conference sessions and events. Production is included.

### Custom WiFi Login | \$2,000 | *Exclusive*

A custom network name and password will make an impression every time an attendee logs in!

## Distribution of Branded Gifts

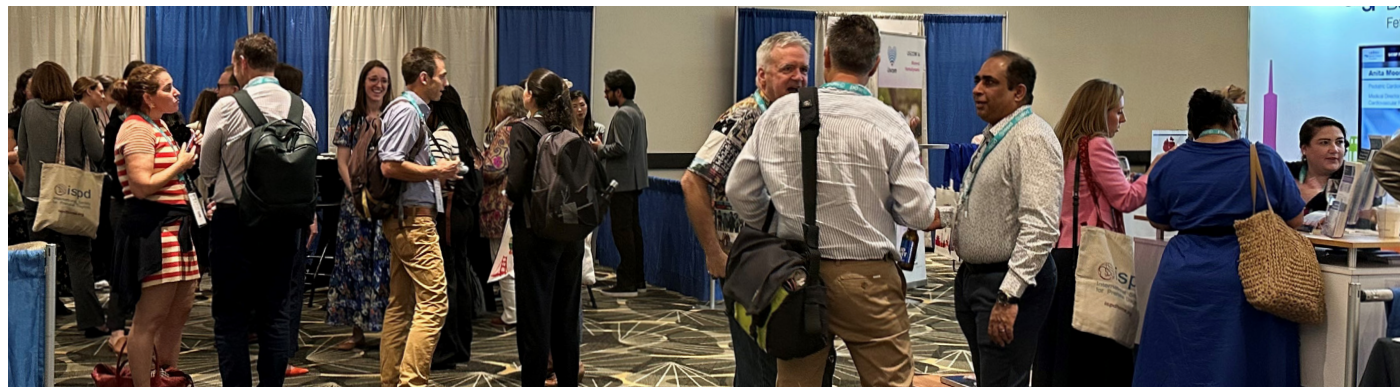
### Notepad & Pen | \$500 | *Exclusive*

ISPD will distribute a notepad and pen that you provide to in-person attendees.\*

### Attendee Gift | \$500

ISPD will distribute a small gift that you provide for in-person attendees, such as a flash drive, hand sanitizer, or some other branded item.\*

\* Your signage, decorations, and/or gifts must be reviewed by ISPD before printing.



30% discount  
is available for  
organizations  
based in Africa

Book with form on page 10  
by 1 September 2025.

Invoice payment  
is due 15 September 2025.

Artwork is due 15 September 2025.

For Questions: Lynne Valentic  
lvalentic@ispdhome.org  
+1 434.284.4693

# Digital Advertising All prices are in U.S. Dollars (USD)

## Virtual Conference Platform

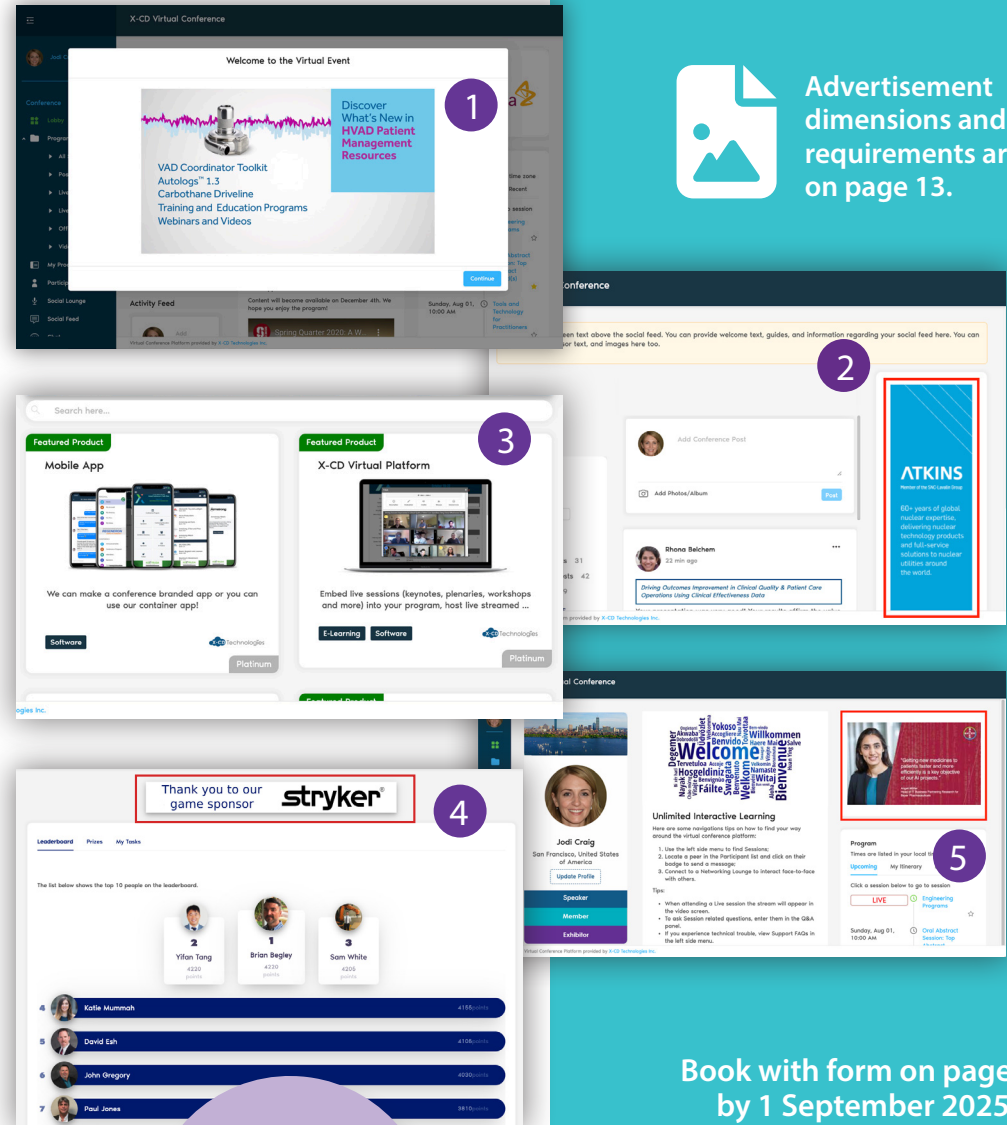
- 1 **Lobby Minimerical** | \$3,000 | *Exclusive*  
Your 15-second video plays **RESERVED** when an attendee signs into the conference platform. Advertiser is responsible for video production.
- 2 **Skyscraper Banner** | \$1,500 | 2 *Available Opportunities*  
Tall banner on the right side of the screen appears on your choice of the **Participant Profile** page or the main **Attendee Chat** page.
- 3 **Featured Product** | \$1,500  
Your product photograph and tagline appear on the **Featured Products** page with a link for attendees to get more information.
- 4 **Gamification Sponsor Banner** | \$1,000 | *Exclusive*  
Dedicated leaderboard ad above Gamification screen and Exhibit Hall.
- 5 **Virtual Lobby Banner** | \$750 | 4 *Available*  
Rotating banner in top right corner of the main landing page of the platform. A maximum of five ads will rotate in this space.



## Conference Mobile App

**Mobile App Splash Page** | \$5,000 | *Exclusive*  
Your ad fills the screen every time an attendee opens the mobile app.

**Mobile App Lobby Banner** | \$1,500 | *Exclusive*  
Your banner ad appears **RESERVED** at the top of the main screen in the mobile app.



Advertisement dimensions and requirements are on page 13.

30% discount is available for organizations based in Africa

Book with form on page 11 by 1 September 2025.  
Invoice payment is due 15 September 2025.  
Artwork is due 15 September 2025.

For Questions:  
**Lynne Valentic, lvalentic@ispdhome.org, +1 434.284.4693**

# Affordable Advertising

All prices are in U.S. Dollars (USD)

## Start-up Company Pop-up Banner

Production Included | \$2,500 Without Production | \$1,000

For companies that have been in **business 2 years or less**. Your banner will be displayed in a dedicated space in the exhibit hall. ISPD can manage production, or you may ship or bring your own banner.\*

Maximum size: 1m wide x 2m high (3 feet x 6 feet)



## Clickable Banner Image in an ISPD Email Blast

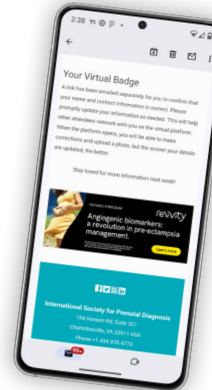
Your clickable banner image will be distributed in one of ISPD's email blasts to over 5,000 contacts. ISPD will contact you to confirm dates.

Conference Update | \$1,000

Program updates and announcements are sent to prospective attendees.

Know Before You Go | \$2,000 **RESERVED** | Exclusive, Sent twice

Two "Know Before You Go" messages are sent to registered attendees during the last two weeks before the conference and receive high open rates.



## One-Page Flier | \$700

ISPD will distribute your one-page flier to attendees on-site (printed) and posted as a PDF in the virtual conference platform.

Advertiser is responsible for printing and shipping.\*

\* Your pop-up banner or flier must be reviewed by ISPD before printing.



Book with form on page 11 by 1 September 2025.

Invoice payment is due 15 September 2025.

Artwork is due 15 September 2025.



Advertisement dimensions and requirements are on page 13.

For Questions: Lynne Valentic  
lvalentic@ispdhome.org  
+1 434.284.4693

30% discount is available for organizations based in Africa

# Exhibit, Support, and Branding Booking Form

Exhibit Dates  
31 October –  
2 November 2025

## Contact Information (please print)

Company Name (as it should appear in print/on screen): \_\_\_\_\_

Street Address: \_\_\_\_\_

City, State/Province: \_\_\_\_\_ Postcode: \_\_\_\_\_ Country: \_\_\_\_\_

Company Telephone: \_\_\_\_\_ Company Email: \_\_\_\_\_

Website Link: \_\_\_\_\_

(for use on the conference website and conference platform/app)

Exhibit Contact Name (to receive correspondence): \_\_\_\_\_

Contact Email: \_\_\_\_\_ Contact Telephone: \_\_\_\_\_

▶ I agree to the Rules and Regulations on page 14: \_\_\_\_\_ (Signature)

I confirm that the main headquarters of the organization above are in Africa \_\_\_\_\_ (Initial)

## Package with Exhibit Space

Premier Partner: \$15,000     Exhibitor, For-profit: \$3,000

Education Partner: \$10,000     Exhibitor, Non-profit: \$1,800

Industry Partner: \$7,500

## Exhibit Options

Add 3x3m space: \$1,500     Booth is NOT needed  
(subject to availability)    (does not affect package price)

Booth furnishings may be ordered at

<https://servicesorderforms.co.za/ispd2025/>

## Exhibit Booth Assignment

See [ispdhome.org/ISPD2025/Exhibitors](https://ispdhome.org/ISPD2025/Exhibitors) for an updated floor plan.

Booth No. \_\_\_\_\_  
                    First choice                      Second choice                      Third choice

Competitors you wish not to be near if possible:

Booths are assigned on a first-come, first-served basis. We cannot guarantee separation from competitors.

\* Presentation outlines and designs for signage, decorations, and gifts must be reviewed by ISPD in advance.

## Exclusive Opportunities

Industry Symposium: \$12,000 each\*

Friday **RESERVED**     Sunday Morning

Saturday **RESERVED**     Sunday Lunch

Saturday Afternoon

Innovation Theater: \$2,500 each\*

Friday, 31 October **RESERVED**

Saturday, 1 November **RESERVED**

Sunday, 2 November 2025 **1 AVAILABLE**

Welcome Reception: \$7,500\*

Beverage Break: \$5,000 each

Friday Morning     Friday Afternoon

Saturday Morning     Saturday Afternoon

Sunday Morning

Lanyards for Attendee **RESERVED**

Custom WiFi Login: \$2,000

## Distribution of Branded Gifts\*

Notepad & Pen **RESERVED**

Attendee Gift: \$500 — Describe your gift:

(e.g., stress ball, flash drive, or hand sanitizer)

Organizations with their main headquarters in Africa are eligible for a 30% discount.

Complete this form and send it to one of the addresses below. We will send an invoice for the items you selected.

Email: [Ivalentic@ispdhome.org](mailto:Ivalentic@ispdhome.org)

Surface:

ISPD Headquarters

820 East High Street, Suite A  
Charlottesville, VA 22902 USA

## Payment Information

▶ All prices are in U.S. Dollars (USD)

Booking due:

1 September 2025

Payment by invoice due:

15 September 2025

ACH or check preferred

**Refund Policy:** Cancellations must be made in writing by 31 July 2025 to receive a 50% refund. No refunds will be made after 31 July 2025.

## Further Instructions

ISPD staff will contact you with further details about your selections after your booking is received.

Also see the list of deadlines on page 12.

# Advertisement Booking Form

## Contact Information (please print)

Company Name (as it should appear in print/on screen): \_\_\_\_\_

Street Address: \_\_\_\_\_

City, State/Province: \_\_\_\_\_ Postcode: \_\_\_\_\_ Country: \_\_\_\_\_

Company Telephone: \_\_\_\_\_ Company Email: \_\_\_\_\_

Website Link: \_\_\_\_\_

(for use on the conference platform and/or mobile app)

Contact Name (to receive correspondence): \_\_\_\_\_

Contact Email: \_\_\_\_\_ Contact Telephone: \_\_\_\_\_

I confirm that the main headquarters of the organization above are in Africa \_\_\_\_\_ (Initial)

## Digital Ads — Virtual Conference Platform

Lobby Minimerical: \$3,000 **RESERVED**

Skyscraper Banner: \$1,500 **1 AVAILABLE**

Featured Product: \$1,500

Gamification Sponsor Banner: \$1,000 **EXCLUSIVE**

Virtual Lobby Banner: \$750 **4 AVAILABLE**

## Digital Ads — Conference Mobile App

Mobile App Splash Page: \$5,000 **EXCLUSIVE**

Mobile App Lobby Banner: **RESERVED EXCLUSIVE**

## Print Advertising

### Start-up Company Pop-up Banner

Production Included: \$2,500

Without Production: \$1,000\*

For companies in business 2 years or less.

Flier (one page): \$700

Advertiser is responsible for printing and shipping.\*

\* Your banner/flier design must be reviewed by ISPD before printing.

Large format  
printing is  
available from our  
exhibit partner.



**Artwork is due Monday,  
15 September 2025,  
except where noted. Design  
requirements are on page 13.**

## Email Banners

"Know Before You Go" Banner: **RESERVED EXCLUSIVE**  
Artwork and link due Thursday, 9 October 2025.

Clickable Banner Image in an ISPD email: \$1,000

Preferred distribution: week of \_\_\_\_\_

(Week of October 6 is the latest available)

Artwork and link are due the Thursday before your  
distribution week.

NOTE: Emails are sent over two days to optimize delivery  
to recipients in all time zones. We cannot send on a  
particular date.

Organizations with their  
main headquarters in  
Africa are eligible for a  
30% discount.

Complete this form and send it to  
one of the addresses below. We will  
send an invoice for the items you  
selected.

Email: [ivalentic@ispdhome.org](mailto:ivalentic@ispdhome.org)

Surface:

ISPD Headquarters

820 East High Street, Suite A  
Charlottesville, VA 22902 USA

## Payment Information

► All prices are in U.S. Dollars (USD)

Booking due:

1 September 2025

Payment by invoice due:

15 September 2025

ACH or check preferred

**Refund Policy:** Cancellations must  
be made in writing by 31 July 2025  
to receive a 50% refund. No refunds  
will be made after 31 July 2025.

## Further Instructions

ISPD staff will contact you  
with further details about your  
selections after your booking is  
received.

Also see the list of deadlines on  
page 12.

## Deadlines for Support, Exhibits, Branding, and Advertising

Who	What	How
<b>Thursday Before Your Distribution Week</b>		
Partners & Advertisers	Banner ad artwork for ISPD email (see requirements on page 13)	<a href="mailto:mowens@ispdhome.org">mowens@ispdhome.org</a>
<b>1 September 2025 (Mon)</b>		
Everyone	Reservation form, Online payment	PDF form, etc. to <a href="mailto:lvalentic@ispdhome.org">lvalentic@ispdhome.org</a>
Partners & Exhibitors	Large, HIGH RESOLUTION Logo – pdf, ai, or eps preferred	
Partners & Exhibitors	Company description – 250 words or fewer	
<b>15 September 2025 (Mon)</b>		
Everyone not paid online	Payment by Invoice	Invoice emailed to you
Premier and Education Partners	Social Media Channel(s) selected	<a href="mailto:lvalentic@ispdhome.org">lvalentic@ispdhome.org</a>
Education Partners	Email list selected (before/after conference)	<a href="mailto:lvalentic@ispdhome.org">lvalentic@ispdhome.org</a>
Partners & Exhibitors	Booth Representative Names and Email Addresses	<a href="mailto:lvalentic@ispdhome.org">lvalentic@ispdhome.org</a>
Advertisers	Digital Ad Artwork for virtual platform / mobile app (see page 13)	<a href="mailto:mowens@ispdhome.org">mowens@ispdhome.org</a>
Branding Marketers & Start-ups	ISPD approval of gift / notepad & pen / flier / pop-up banner / signage	<a href="mailto:lvalentic@ispdhome.org">lvalentic@ispdhome.org</a>
Branding Marketer (exclusive)	Logo for Lanyard	<a href="mailto:lvalentic@ispdhome.org">lvalentic@ispdhome.org</a>
Branding Marketer (exclusive)	WiFi Customization (with ISPD assistance)	<a href="mailto:lvalentic@ispdhome.org">lvalentic@ispdhome.org</a>
<b>16 October (Thur)</b>		
<b>ALL</b> Partners & Exhibitors	Booth Services Order Forms Deadline (20% surcharge after this date)	<a href="https://servicesorderforms.co.za/ispd2025/">https://servicesorderforms.co.za/ispd2025/</a>
<b>17 October (Fri)</b>		
Partners & Exhibitors	Collateral uploaded to conference platform (GO-LIVE: 27 October 2025)	Link will be emailed
<b>1 October 2025 (Wed)</b>		
Partners & Exhibitors	Shipment arrival at warehouse to avoid surcharges	Link TBD
<b>30 October 2025 (Thur)</b>		
Partners & Exhibitors	Exhibit Move-in, 11:00 AM – 7:00 PM	Link TBD
<b>2 November 2025 (Sun)</b>		
Partners & Exhibitors	Exhibit Move-out, 2:00–6:00 PM	Link TBD

# Advertisement Requirements

Send ad artwork (and any questions) to Marilla Owens at [mowens@ispdhome.org](mailto:mowens@ispdhome.org).

▶ When you send your artwork, please let Ms. Owens know the FULL LINK to use with your ad/minimerical/product.

Artwork Deadline  
**15 September 2025**  
(except email banners)

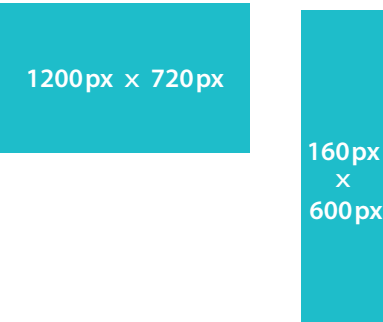
## Digital Ads for Virtual Conference Platform

### Lobby Minimerical

- File must be an mp4
- Maximum length: 15 seconds
- Maximum file size: 20MB

### Rotating Virtual Lobby Banner

- 1200 pixels wide x 720 pixels tall
- Must be a .png file
- Maximum file size: 1MB



### Skyscraper Banner

- 160 pixels wide x 600 pixels tall
- Must be a .png file
- Maximum file size: 1MB

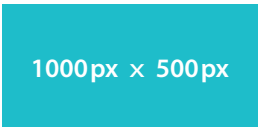
### Gamification Sponsor Banner

- 728 pixels wide x 90 pixels tall
- Must be a .png file
- Maximum file size: 1MB



### Featured Product

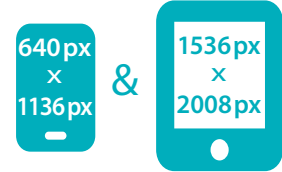
- 1000 pixels wide x 500 pixels tall
- Must be a .png or .jpg file
- Maximum file size: 1MB
- Product description: max 250 words



## Digital Ads for Conference Mobile App

### Mobile App Splash Page (2 images required)

- 640 pixels wide x 1136 pixels high – for phones
- 1536 pixels wide x 2008 pixels high – for tablets
- Must be a .png or .jpg file
- Maximum size (each file): 1MB



### Mobile App Lobby Banner

- 1200 pixels wide x 180 pixels tall
- Must be a .png file
- Maximum file size: 1MB



## Email Banners

### Artwork Deadline:

**Thursday before your distribution week**

### Large banner (Premier Partner):

625 pixels wide x 250 pixels high



### Standard banner:

625 pixels wide x 150 pixels high



### File format:

.png, .jpg, or .gif no more than 100KB – NO Animation

# Exhibit Rules and Regulations

**What the Exhibit Fee Includes:** Please see pages 4-5 for details and rates.

**Payment Schedule:** Exhibit registration must be received by ISPD by **1 September 2025** and payment received by **15 September 2025** for company name to be listed in the printed program. Advertisements must be received by ISPD by 1 September 2025 to be included in the official program. Payment and remittance must be made to ISPD in U.S. Dollars (USD). Payment may be made by check or credit card (American Express, MasterCard or Visa), or wire transfer. Transfer fees may apply. A surcharge of \$25 USD will be assessed to cover any collection fees.

**Certificate of Insurance:** All exhibitors and their authorized decorators must have liability insurance. Each exhibitor must provide a one-page "Certificate of Insurance" in the name of the International Society for Prenatal Diagnosis, from the exhibitor's insurance company showing coverage for the duration of the event, including move-in and move-out. The minimum requirement is liability and property damage insurance in an amount no less than \$1,000,000 per occurrence.

**Assignment of Space:** Exhibit stand assignments will be made on a first-come, first-served basis upon receipt of a completed Exhibitor Registration form. No assignments will be made without payment. Upon assignment, you will receive confirmation informing you of your assigned number and location. ISPD reserves the right to assign the next best available space when the requested space is unavailable.

**Exhibitor Restrictions:** The use of exhibit space is solely for the purpose of exhibiting a display having educational or practical application in the field of prenatal diagnosis and therapy or related fields. Sales, order taking, and entering into contracts of sale on the exhibit floor or other related convention areas during the meeting are discouraged. Interviews, demonstrations, distribution of literature, etc., will be permitted only within exhibitors' spaces. The use of the International Society for Prenatal Diagnosis (ISPD) name and/or logo is prohibited on signs or promotional literature in or around the exhibit area. These materials may refer *only* to the event location, dates, and title, "25th International Conference on Prenatal Diagnosis and Therapy." Materials distributed off-site before or after (not during) the conference dates may include the official ISPD supporter or exhibitor badge.

**No events may be scheduled to conflict with ISPD conference functions.**

**Industry Symposia:** All industry functions must receive ISPD authorization and are subject to the terms provided to participants by ISPD.

**Liability/Hold Harmless:** Exhibitor hereby agrees to and does indemnify, hold harmless, and defend ISPD from and against any and all liability, responsibility, loss, damage, cost or expense to which ISPD may become subject as a result of any claim arising out of any breach by Exhibitor of Exhibitor's obligations under the Exhibit Rules and Regulations during the Exhibit Dates.

**Protection of Exhibit Space:** Nothing shall be posted, tacked, nailed, screwed or otherwise attached to columns, walls, floors or other parts of the hotel or convention center without the written permission of ISPD or a representative of the venue property, which must be provided to ISPD. Banners and display elements may not exceed a height of 3 feet, if placed on table. 'Subleasing' of space is not permitted. Any noise-making device shall be operated at a level that does not interfere with other exhibitors. Exhibit stand hardware and materials may not obscure the line of sight to another exhibitor's stand.

**Terms and Conditions for Exhibits:**

By checking off the box on the registration form, you hereby authorize ISPD to reserve exhibit space for use by the above company or organization. The undersigned acknowledges receipt of and agrees to abide by the Exposition Rules and Regulations available in this prospectus and on the ISPD website at [www.ispdhome.org](http://www.ispdhome.org) and to all conditions under which exhibit space is leased to ISPD. ISPD reserves the absolute right, at any time, to determine the eligibility of any company or product for inclusion in the exhibit. The undersigned acknowledges that space assignments shall be acceptable unless ISPD is notified in writing within fifteen (15) days of the date of assignment notification. The undersigned specifies that the products or services listed in your description are those to be exhibited.

**Cancellation or Change of Exhibit Dates or Venue:** In the event that the conference is cancelled, exhibit dates change, or the conference venue changes, *including a change to a virtual-only format*, the standard cancellation policy and deadline still apply:

**Cancellations must be made in writing by 31 July 2025 to receive a 50% refund. No refunds will be made after 31 July 2025.**

**Enforcement of Rules and Regulations:**

The rules and regulations of ISPD's exhibits are intended to bring order and fairness to the conference. The exhibitor agrees that ISPD shall have the right to make such rules and regulations or changes in floor plan arrangements of exhibit stands for said exhibition as it shall deem necessary. ISPD shall have the final determination for enforcement of all rules, regulations and conditions. ISPD reserves the right without recourse to control or prohibit any exhibit or part of any exhibit that is contrary to the ISPD mission and values. This includes the conduct of persons and the content and placement of printed matter. ISPD may dismiss an exhibitor from the conference for unethical conduct. It is agreed that no refund of fees shall be made upon dismissal.

For Questions:

Lynne Valentic  
Conference Director  
[lvalentic@ispdhome.org](mailto:lvalentic@ispdhome.org)  
+1 434.284.4693



**ispd**

*Building Global Partnerships  
in Genetics and Fetal Care*

**International Society for Prenatal Diagnosis**

820 East High Street, Suite A | Charlottesville, VA 22902, USA

+1 434.979.4773 | [info@ispdhome.org](mailto:info@ispdhome.org) | [www.ispdhome.org](http://www.ispdhome.org)

